

# Highland Village Subdivision - 9th Addition

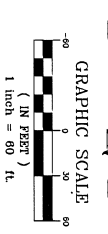
NE 1/4 OF THE NW 1/4 OF SECTION 7, T. 6 S., R. 35 E., B.M. BANNOCK COUNTY, IDAHO

## NOTES

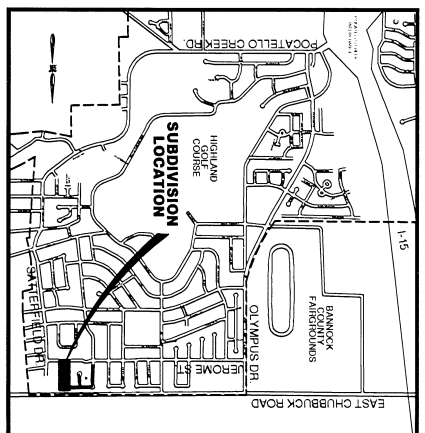
- EASEMENTS ARE 10' WIDE AND ARE FOR PUBLIC UTILITIES, DRAINAGE, AND ROADWAY SLOPES UNLESS OTHERWISE NOTED
- LOT 5, BLOCK 2 IS DEDICATED TO THE CITY OF POCAHELLO FOR STORM WATER DETENTION AND FOR PUBLIC RIGHT-OF-WAY FOR THE FUTURE DEVELOPMENT OF CHUBBUCK ROAD. SAID LOT IS COVERED WITHS ERIEVIEW WITH A PUBLIC UTILITY AND DRAINAGE EASEMENT
- EASEMENT NOT DEDICATED  
ALL LOTS IN THIS SUBDIVISION ARE SUBJECT TO SEVEN (7) FOOT WIDE DRAINAGE EASEMENTS SAID EASEMENTS ARE TO ADJOIN AND EXTEND ALONG ALL INTERIOR LOT LINES AND ADJOIN THE SUBDIVISION BOUNDARY LINE. LOTS MUST BE GRADED AND MAINTAINED SO AS TO MINIMIZE DRAINAGE TO ADJOINING PROPERTIES
- JR SIMPLOT EASEMENT WIDTH WAS AGREED UPON BY BOTH PARTIES AS 35 FEET ADJOINING THE NORTH LINE OF SECTION 7 BY LETTER DATED MARCH 15, 1989. (RECORDED AS INST. NO. 989175)

## CURVE TABLE

NUMBER	DELTA ANGLE	CHORD DIRECTION	TANGENT RADIUS	ARC LENGTH	CHORD LENGTH
C1	90°00'00"	S 45°00'00" E	20.00	31.42	28.28
C2	44°24'55"	S 22°12'28" W	8.16	15.50	15.12
C3	13°21'51"	S 37°43'59" W	5.86	11.66	11.84
C4	67°24'35"	S 02°39'14" E	33.35	59.00	55.49
C5	53°38'30"	S 63°10'46" E	23.28	46.81	45.12
C6	67°24'35"	N 02°39'14" E	25.28	50.00	55.49
C7	67°24'35"	N 63°10'46" E	33.35	59.00	55.49
C8	13°21'49"	N 37°44'01" W	5.86	11.66	11.84
C9	44°24'55"	N 22°12'28" E	8.16	15.50	15.12
C10	90°00'00"	N 45°00'00" E	20.00	31.42	28.28



**BASIS OF BEARING**  
PER CENTRAL MERIDIAN OF THE EAST ZONE OF THE IDAHO STATE PLANE COORDINATE SYSTEM



## LEGEND:

- SUBDIVISION BOUNDARY LINE
- SUBDIVISION LOT LINES
- EASEMENT SIDELINES (SEE NOTE 1)
- STREET CENTERLINE / SECTION LINE
- EXISTING RECORDED EASEMENT SIDELINE
- TEMPORARY EASEMENT (SEE NOTE)
- DEED (RECORDED) LINE OF ADJACENT PROPERTY OWNERS
- SET 12" X 24" REBAR WITH PLASTIC CAP STAMPED R.M.E.S. PLS 2341\* (LOT CORNERS AND END OF CURVES)
- SET 5/8" X 3/8" REBAR WITH 2" Ø ALUMINUM CAP STAMPED R.M.E.S. PLS 2341\*
- FOUND 1/2" REBAR WITH PLASTIC CAP MARKED R.M.E.S. PLS 2341\* (OR AS NOTED)
- FOUND 2" Ø ALUMINUM CAP AFFIXED TO A 1/2" REBAR MARKED R.M.E.S. PLS 2341\*
- FOUND 2" ALUMINUM CAP AS SHOWN FOR GREENFIELD HEIGHTS ADDITIONS 1 AND 5
- FOUND SECTION CORNER AS NOTED
- FOUND QUARTER CORNER AS NOTED
- BEARING AND DISTANCE SHOWN ON THE RECORDED PLAT OF GREENFIELD HEIGHTS 1ST ADDITION SUBDIVISION (INST. NO. 985905)
- BEARING AND DISTANCE SHOWN ON THE RECORDED PLAT OF GREENFIELD HEIGHTS SUBDIVISION 5 TH (INST. NO. 94015640)
- EXISTING LOT NUMBERS
- SET CITY STANDBY VALLI TYPE MONUMENT WITH 2" Ø ALUMINUM CAP STAMPED R.M.E.S. PLS 2341\*
- RESTRICTION (SEE NOTE 2)

RECORDING INSTRUMENT NO. \_\_\_\_\_

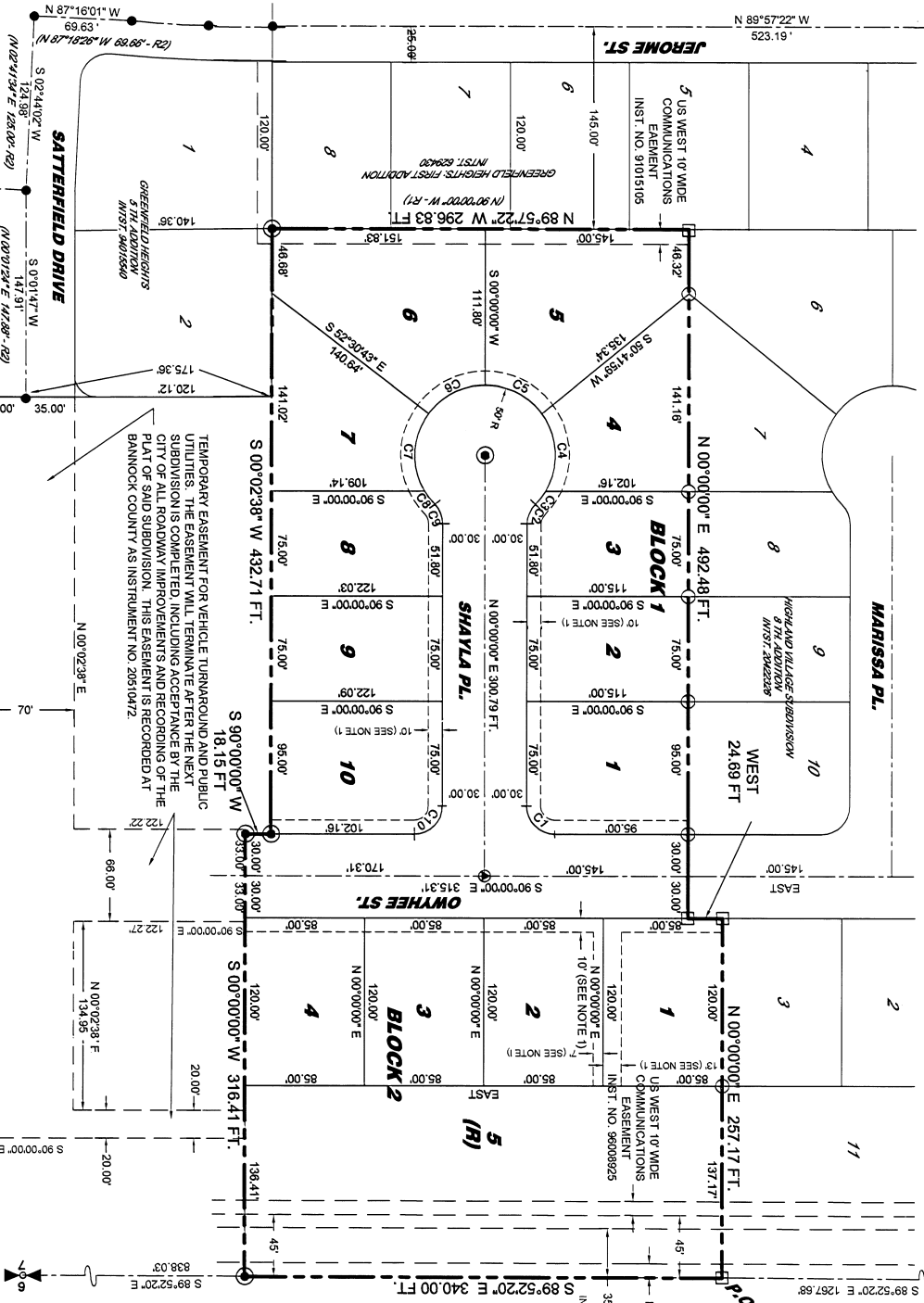
## Highland Village Sub. - 9th Addition

NE 1/4 OF THE NW 1/4 OF SECTION 7, T. 6 S., R. 35 E., B.M. BANNOCK COUNTY, IDAHO



REVISIONS	DATE	BY	DESCRIPTION
1	1/12/05	JPD	SURVEYED BY: JPD, JPD, CJD, JCL
2	4/18/05	JPD	OFFICE WORK BY: JLM, JMG, JLC, JPD
3	5/11/05	JPD	FIELD BOOK NO. _____
4	7/16/2004	JPD	DATE: 07/16/2004
DRAWING: R:\RMES\2004\SAI-INV\SURVEYING\HW-CP.DWG			
SCALE: 1" = 90'			
PROJECT NO.: 02047			
SHEET 1 OF 2			

PROFESSIONAL ENGINEER  
STATE OF IDAHO  
No. 2341  
JAMES P. JONES  
SURVEYOR



FOUND CITY SURVEY VAULT

GREENFIELD HEIGHTS FIRST ADDITION  
INST. NO. 823400

HIGHLAND VILLAGE SUBDIVISION 9TH ADDITION  
INST. #2341

WEST 24.69 FT

US WEST 10' WIDE COMMUNICATIONS EASEMENT  
INST. NO. 91015105

US WEST 10' WIDE COMMUNICATIONS EASEMENT  
INST. NO. 98008925

IDAHO POWER 10' WIDE POWER LINE EASEMENT  
INST. NO. 784069

JR SIMPLOT COMPANY  
INST. # 893175 (SEE NOTE 5)

35' PRELINE EASEMENT  
INST. # 893175 (SEE NOTE 5)

NE COR. SEC. 12, T. 6 S., R. 35 E., B.M. BANNOCK COUNTY B.M. CORNER PERPETUATION INST. NO. 93177

NW SEC. COR. SEC. 7, T. 6 S., R. 35 E., B.M. BANNOCK COUNTY B.M. CORNER PERPETUATION INST. NO. 82648

TEMPORARY EASEMENT FOR VEHICLE TURNAROUND AND PUBLIC UTILITIES. THE EASEMENT WILL TERMINATE AFTER THE NEXT SUBDIVISION IS COMPLETED INCLUDING ACCEPTANCE BY THE PLAT OF SAID SUBDIVISION. THIS EASEMENT IS RECORDED AT BANNOCK COUNTY AS INSTRUMENT NO. 2831612.

THE NORTHWEST CORNER OF LOT 4 BLOCK 7 OF GREENFIELD HEIGHTS 5TH ADDITION

RECORDING INSTRUMENT NO. \_\_\_\_\_