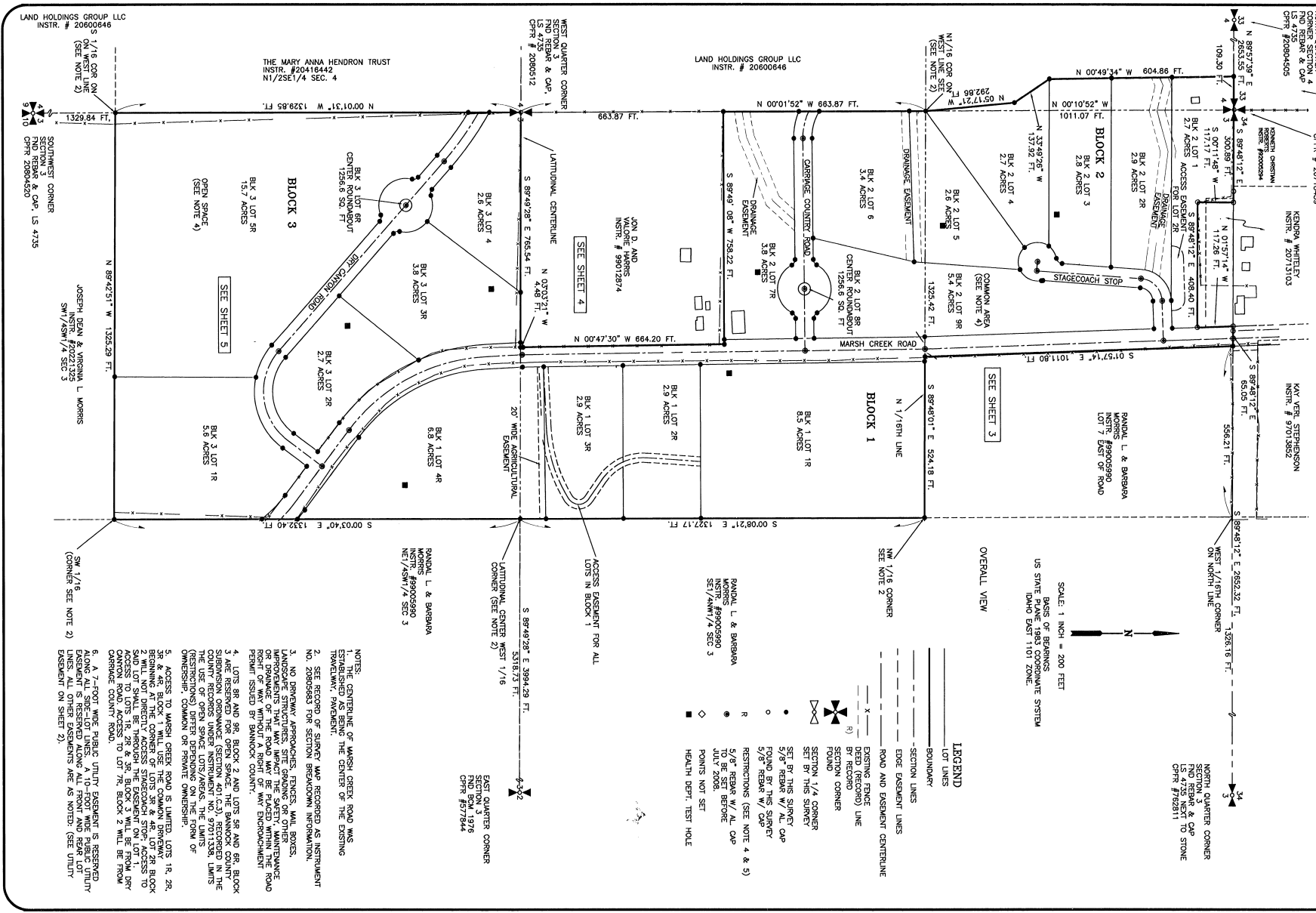


MEADOW RIDGE RANCH, PHASE 1
 LOCATED IN THE WEST 1/2 OF SECTION 3,
 AND THE NE 1/4 OF SECTION 4,
 TOWNSHIP 9 SOUTH, RANGE 36 EAST, B.M.
 BANNOCK COUNTY, IDAHO
 SHEET 1 OF 5



SCALE: 1 INCH = 200 FEET
 BASIS OF BEARINGS
 US STATE PLANE 1983 COORDINATE SYSTEM
 IDAHO DIST 1101 ZONE

OVERALL VIEW

- LEGEND**
- LOT LINES
 - BOUNDARY
 - SECTION LINES
 - EDGE EASEMENT LINES
 - ROAD AND EASEMENT CENTERLINE
 - EXISTING FENCE
 - 1/4 SECTION CORNER
 - SECTION CORNER
 - FOUND
 - SET BY THIS SURVEY
 - 5/8" REBAR W/ AL CAP
 - FOUND BY THIS SURVEY
 - 5/8" REBAR W/ CAP
 - RESTRICTIONS (SEE NOTE 4 & 5)
 - 5/8" REBAR W/ AL CAP TO BE SET BEFORE
 - POINTS NOT SET
 - HEADHOLE DEPT. TEST HOLE

NOTES:

1. THE CENTERLINE OF MARSH CREEK ROAD WAS ESTABLISHED AS SHOWN.
2. SEE RECORD OF SURVEY MAP RECORDED AS INSTRUMENT NO. 20805843 FOR SECTION BREAKDOWN INFORMATION.
3. NO DRIVEWAY APPROACHES, FENCES, MAIL BOXES, LANDSCAPE STRUCTURES, SITE GRADING OR OTHER IMPROVEMENTS THAT MAY IMPACT THE SAFETY, MAINTENANCE OR FUNCTION OF MARSH CREEK ROAD SHALL BE PERMITTED WITHOUT A RIGHT OF WAY WITHOUT A RIGHT OF WAY ENCROACHMENT PERMIT ISSUED BY BANNOCK COUNTY.
4. LOTS 8R AND 9R, BLOCK 2 AND LOTS 5R AND 6R, BLOCK 3 ARE RESERVED FOR OPEN SPACE. THE BANNOCK COUNTY RECORDS UNDER INSTRUMENT NO. 97011338, LIMITS THE USE OF OPEN SPACE LOTS/AREAS. THE LIMITS (RESTRICTIONS) ORDER BE RECORDED ON THE FORM OF (TRANSFER) TO BANNOCK COUNTY.
5. ACCESS TO MARSH CREEK ROAD IS LIMITED. LOTS 1R, 2R, BEGINNING AT THE CORNER OF LOTS 3R & 4R, LOT 2R BLOCK 2 WILL NOT DIRECTLY ACCESS STAGECOACH STOP. ACCESS TO ACCESS TO LOTS 1R, 2R & 3R, BLOCK 3 WILL BE FROM DRY CANYON ROAD. ACCESS TO LOT 7R, BLOCK 2 WILL BE FROM CANYON ROAD.
6. A 7-FOOT WIDE PUBLIC UTILITY EASEMENT IS RESERVED. EASEMENT IS RESERVED ALONG ALL FRONT AND REAR LOT LINES. ALL OTHER EASEMENTS ARE AS NOTED. (SEE UTILITY EASEMENT ON SHEET 2).

LAND SURVEYORS CONSULTING CIVIL ENGINEERS

A. A. HUDSON AND ASSOCIATES

132 SOUTH STATE PRESTON, IDAHO 83263 (208)852-1155

180 EAST 2ND SOUTH SODA SPRINGS, IDAHO 83276 (208)547-4141

MEADOW RIDGE RANCH PHASE 1

SECTION 3 & 4, TOWNSHIP 9 SOUTH, RANGE 36 EAST, BOISE MERIDIAN BANNOCK COUNTY, IDAHO

REVISIONS	SURVEYED BY:
1	OFFICE WORK BY: TC, MP
2	FIELD BOOK NO. ---
	COMPLETION DATE MARCH, 2008

PROJECT NO. 04241

DEVELOPER

LAND HOLDINGS GROUP, LLC
 315 SOUTH 5TH AVE.
 POCATELLO, IDAHO 83201